

Some Inspirations

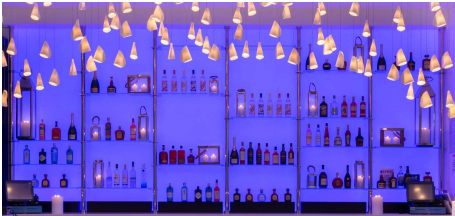
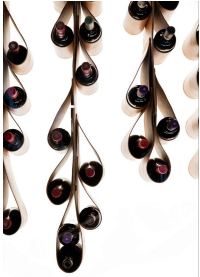
WINE CELLARS

MANUFACTURER : BACKLIGHT srl

CONTACT info@backlightsrl.com

Representative
SCOPES of WORK

SYSTEM



Description of SYSTEM

Backlight Panels mounted by NOFALL magnetic system. ACCESSORIES BY GC

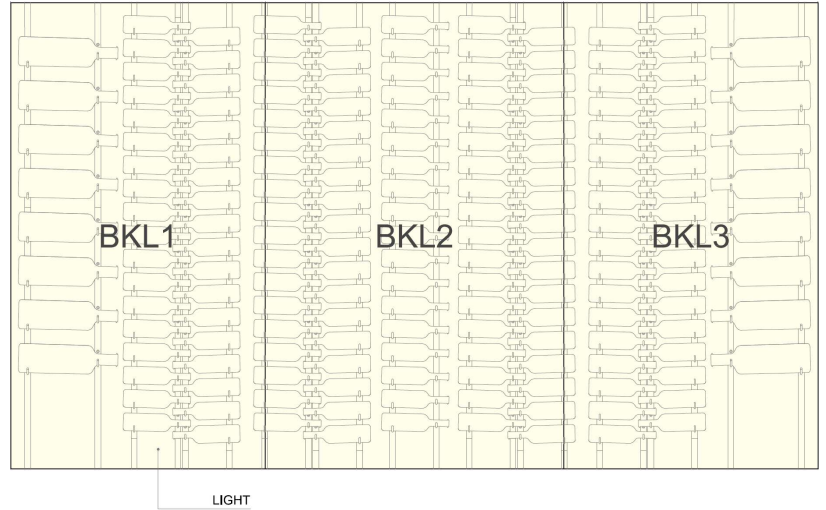
Kelvin Options

2700 K
3200 K
3500 K
4100 K
5000 K
Tunable (2700 to 6500K)
RGB
RGB+W (double layer)

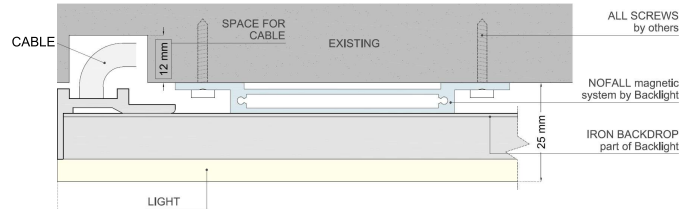
CRI

>80
>95

Example of REQUEST



Representative SECTION of MOUNTING DETAIL of BACKLIGHT PANELS



PRODUCT USED

Lighting Module



Family MAGIC CLOUD NOFALL

Technical Spec

INPUT 24 VDC
DIMMING ELV/MLV, 0-10V, DALI, LUTRON, DMX
WATTAGE 14 W and 28 W / line mt - 4.5 and 9.0 W / line ft depending on module size
LUMENS depending on module size
MIN SIZE 304.8 mm x 609.6 mm - 12 in x 24 in
MAX SIZE 1219.2 mm x 3048 mm - 48 in x 120 in (for different sizes please contact us)
WEIGHT 25 Kg/ sq. mt - 5.7 lbs/sq.ft
THICKNESS 25.0 mm - 0.984 in (including NOFALL)
CERTIFICATIONS CE-EAC-cULus-Storage Area of Clothes Closet
IP GRADE IP40
DRY LOCATION (DAMP LOCATION UNDER REQUEST)